

PMinter

MARIBOR, 18. - 19. SEPTEMBER 2013

www.pminter.eu



„PM10 and B(a)P in Carinthia“

Dipl.Ing. Gerhard Heimburger
Amt der Kärntner Landesregierung, Österreich



Naložba v vašo prihodnost
Operacijo delno financira Evropska unija
Evropski sklad za regionalni razvoj



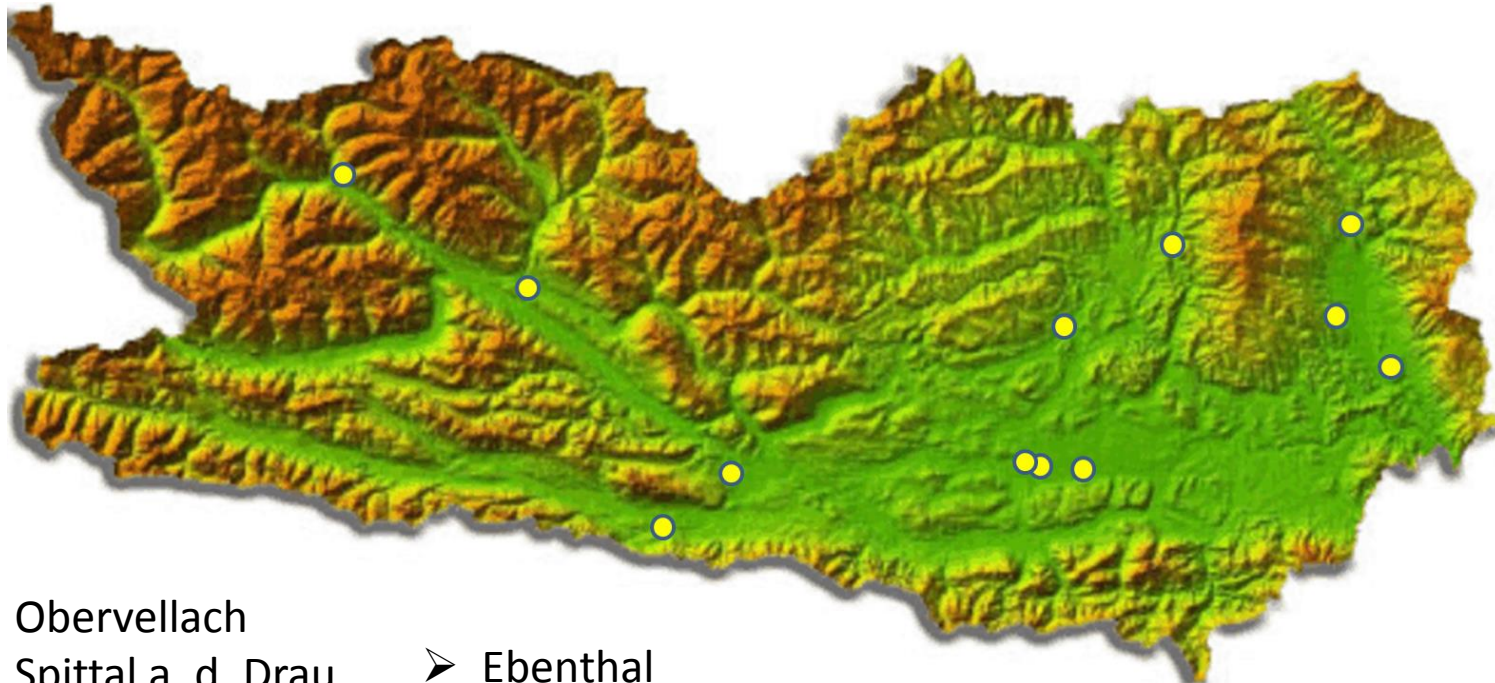
Investition in Ihre Zukunft
Operation teilfinanziert von der Europäischen Union
Europäischer Fonds für regionale Entwicklung

PMinter

Structure

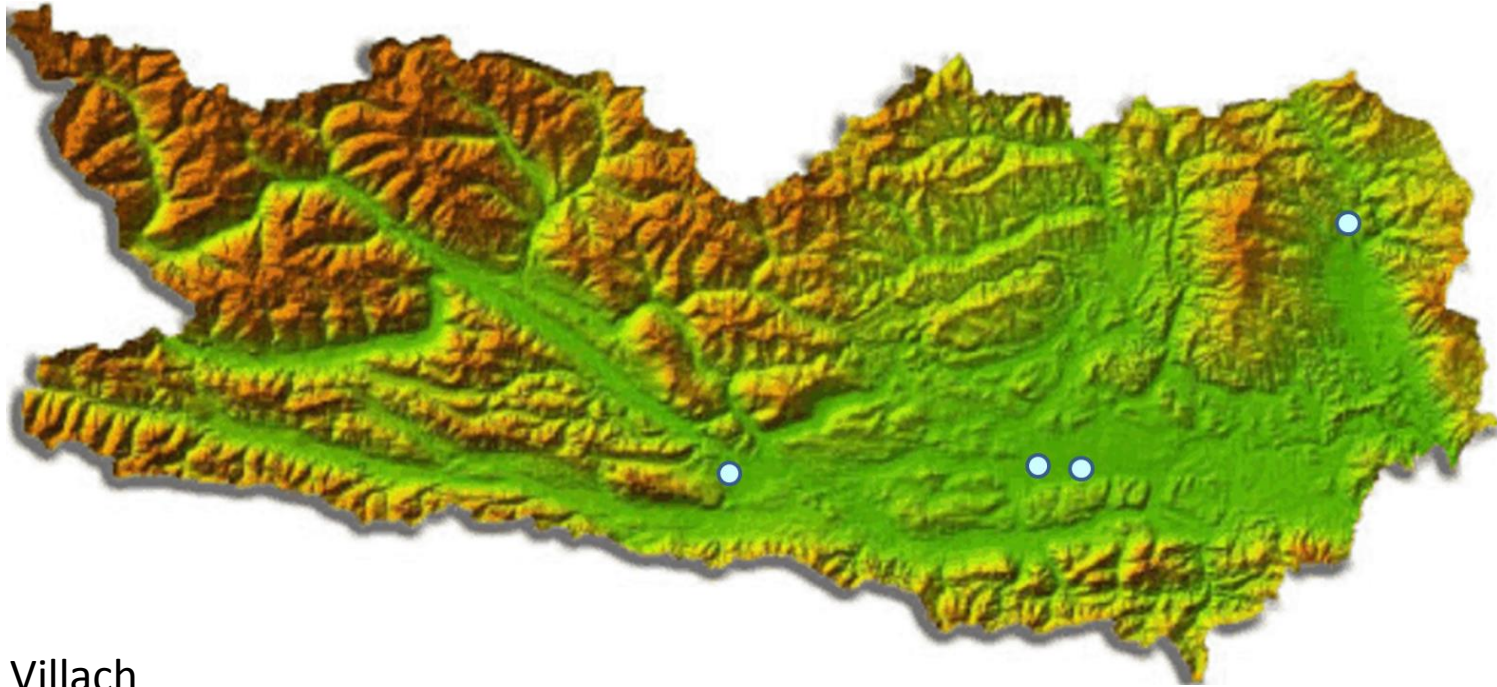
- Site maps of the measuring stations
- Measuring systems
- Diagrams (2010-2012)
- Limit and target values
- Comparison (2010-2012)
- PM10 source apportionment (winter 2008/09)
- Status survey and programmes (IG-L)
- Acknowledgement

Site map „PM10 measuring stations“



- Obervellach
- Spittal a. d. Drau
- Arnoldstein
- Villach
- Klagenfurt (2)
- St. Veit a. d. Glan
- Ebenthal
- Klein St. Paul
- St. Andrä i. Lavanttal
- Wolfsberg
- St. Georgen i. Lavanttal

Site map „B(a)P measuring stations“



- Villach
- Klagenfurt
- Ebenthal
- Wolfsberg

Measuring systems

30m³/h



HVS

2,3m³/h

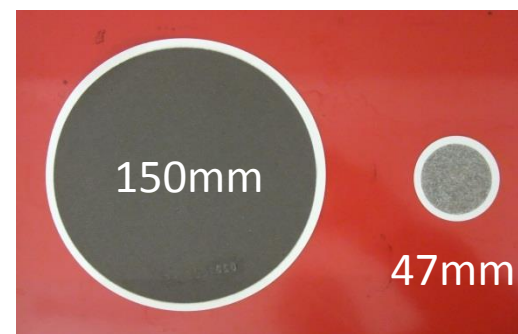


LVS

1m³/h



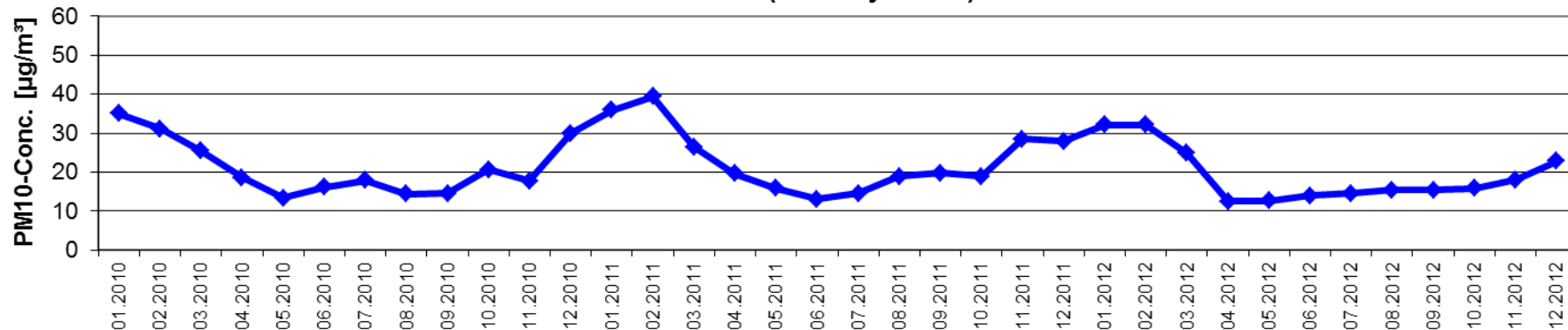
Continuous monitor



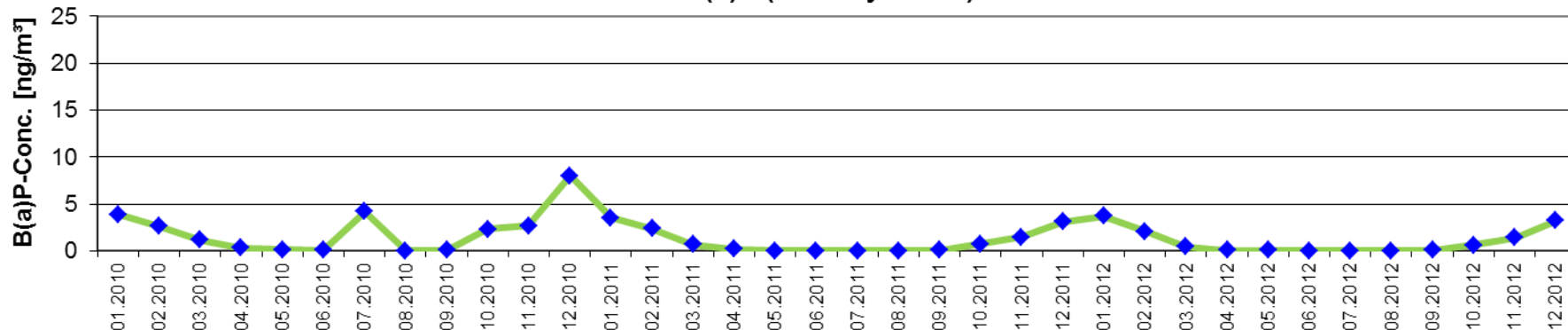
HVS Filter LVS

Diagrams „Villach“

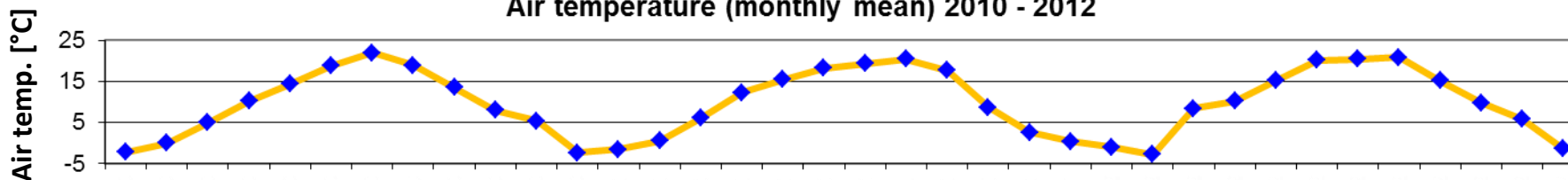
Concentrations PM10 (monthly mean) 2010 - 2012



Concentrations B(a)P (monthly mean) 2010 - 2012



Air temperature (monthly mean) 2010 - 2012



Naložba v vašo prihodnost
Operacijo delno financira Evropska unija
Evropski sklad za regionalni razvoj

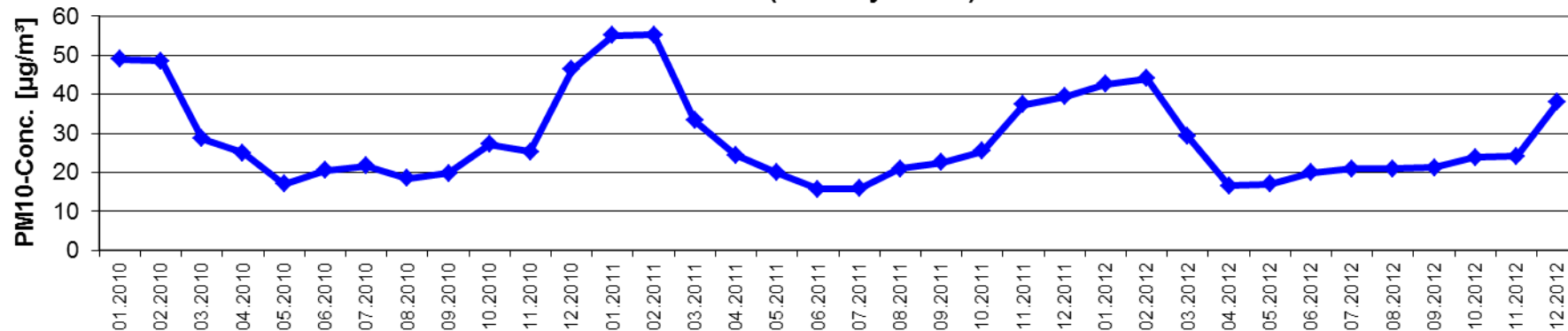


Investition in Ihre Zukunft
Operation teilfinanziert von der Europäischen Union
Europäischer Fonds für regionale Entwicklung

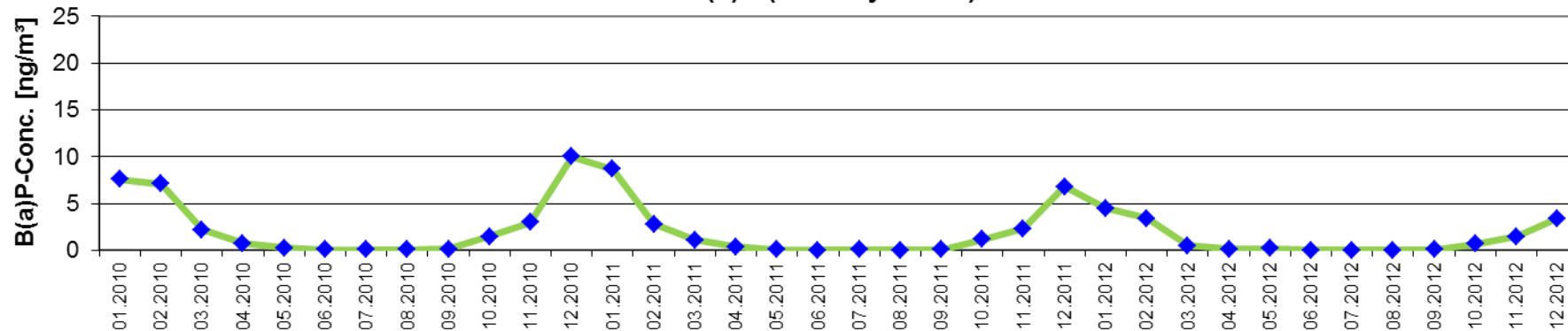


Diagrams „Klagenfurt“

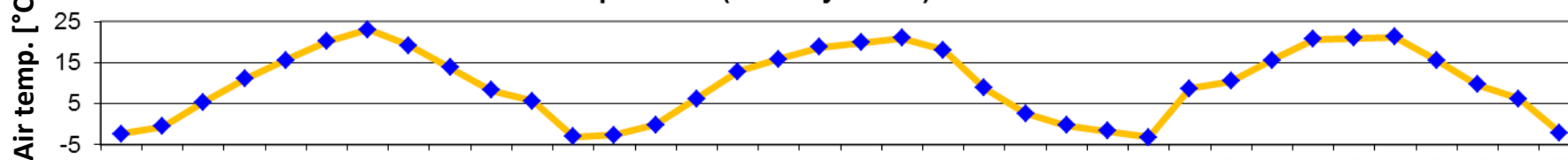
Concentrations PM10 (monthly mean) 2010 - 2012



Concentrations B(a)P (monthly mean) 2010 - 2012



Air temperature (monthly mean) 2010 - 2012



Naložba v vašo prihodnost
Operacijo delno financira Evropska unija
Evropski sklad za regionalni razvoj

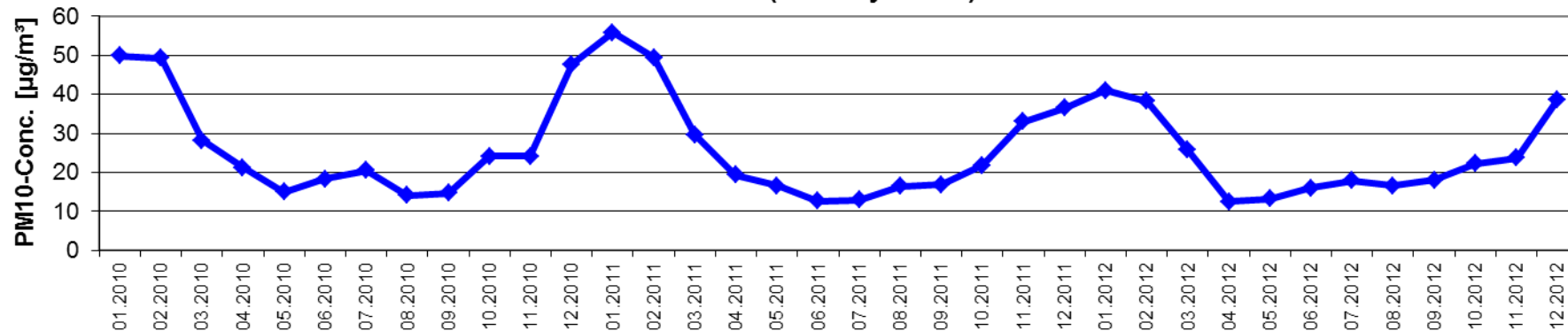


Investition in Ihre Zukunft
Operation teilfinanziert von der Europäischen Union
Europäischer Fonds für regionale Entwicklung

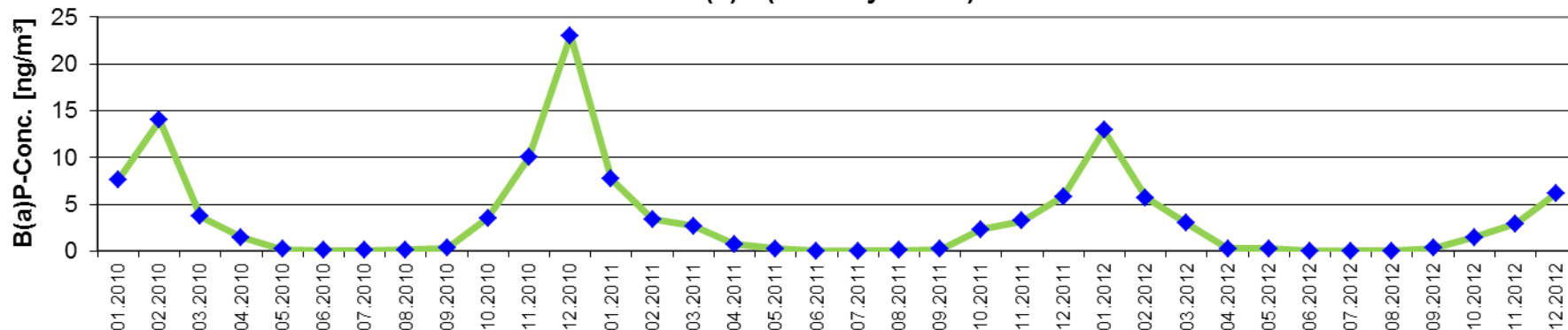


Diagrams „Ebenthal“

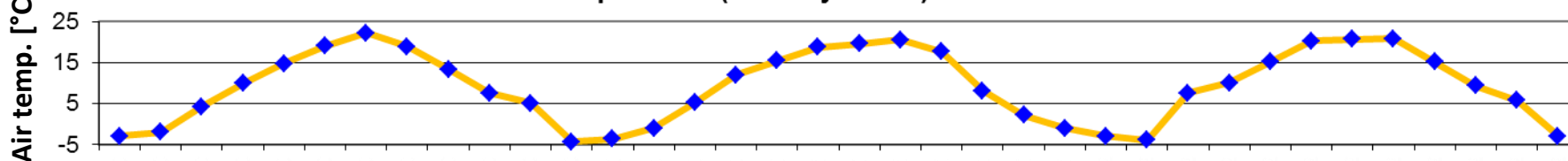
Concentrations PM10 (monthly mean) 2010 - 2012



Concentrations B(a)P (monthly mean) 2010 - 2012



Air temperature (monthly mean) 2010 - 2012



Naložba v vašo prihodnost
Operacija delno financira Evropska unija
Evropski sklad za regionalni razvoj

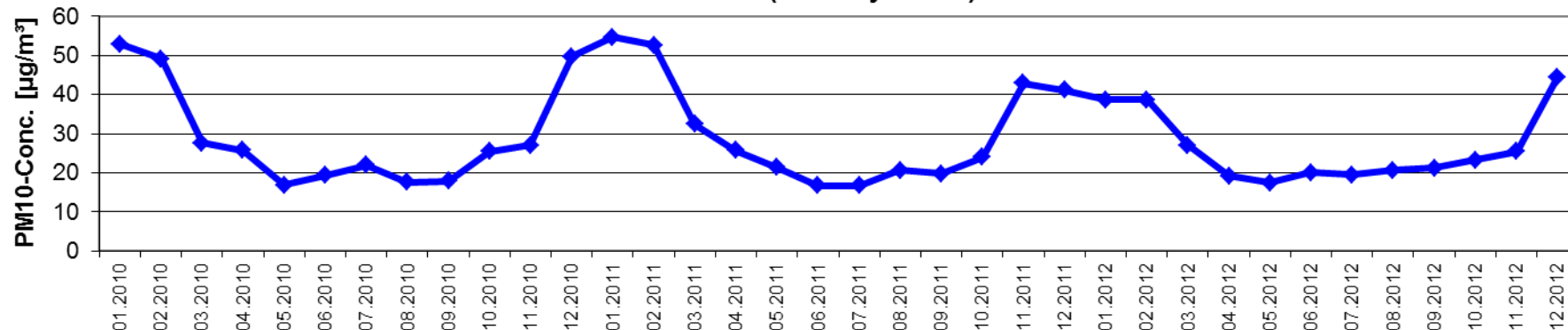


Investition in Ihre Zukunft
Operation teilfinanziert von der Europäischen Union
Europäischer Fonds für regionale Entwicklung

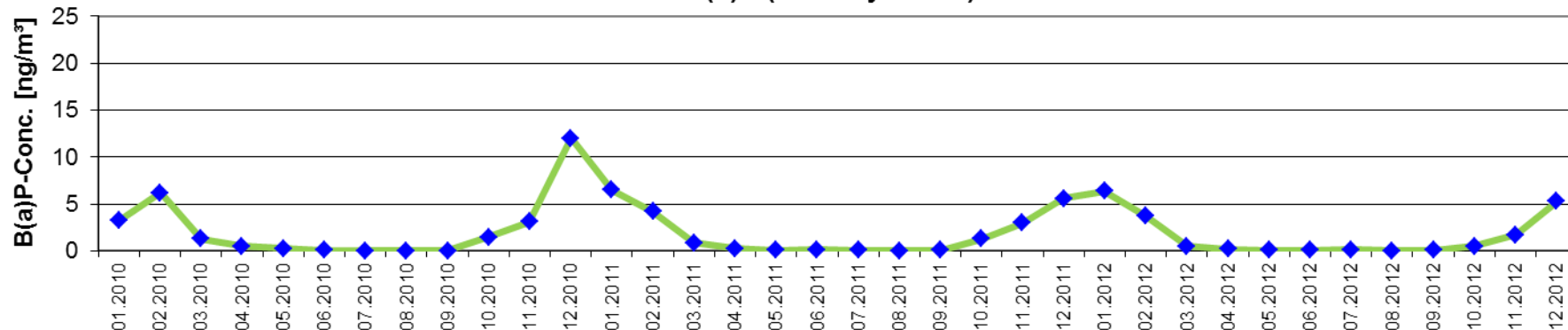


Diagrams „Wolfsberg“

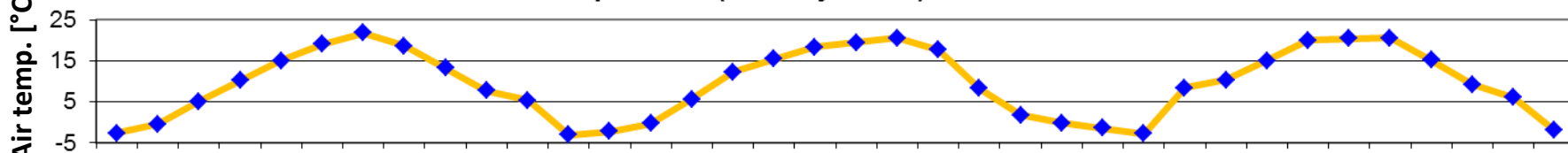
Concentrations PM10 (monthly mean) 2010 - 2012



Concentrations B(a)P (monthly mean) 2010 - 2012



Air temperature (monthly mean) 2010 - 2012



Naložba v vašo prihodnost
Operacijo delno financira Evropska unija
Evropski sklad za regionalni razvoj



Investition in Ihre Zukunft
Operation teilfinanziert von der Europäischen Union
Europäischer Fonds für regionale Entwicklung



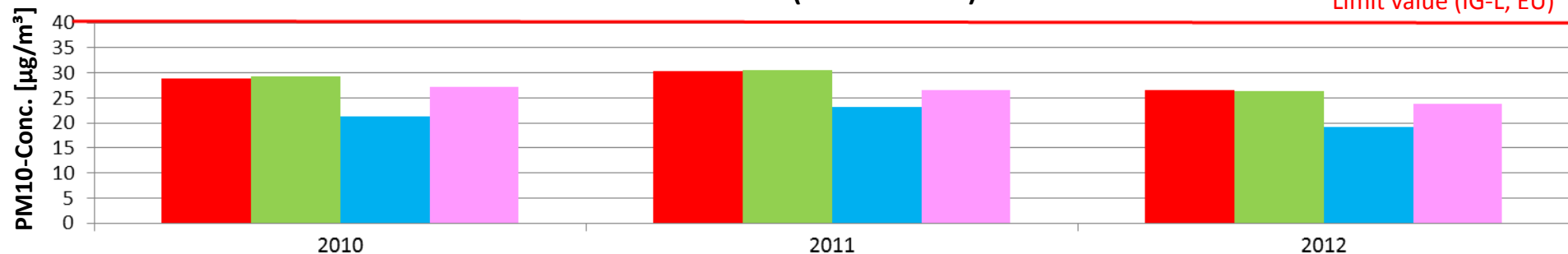
PM10: Annual mean = $40 \mu\text{g}/\text{m}^3$ (LV: IG-L, EU)
Daily mean = $50 \mu\text{g}/\text{m}^3$ (LV: IG-L, EU)
→ max. allowed number of days with
daily mean $> 50 \mu\text{g}/\text{m}^3$ per year:
25 (LV: IG-L from 2010 onwards) / 35 (LV: EU)

B(a)P: Annual mean = $1 \text{ ng}/\text{m}^3$ (TV: IG-L*, EU)
(*LV from 2013 onwards)

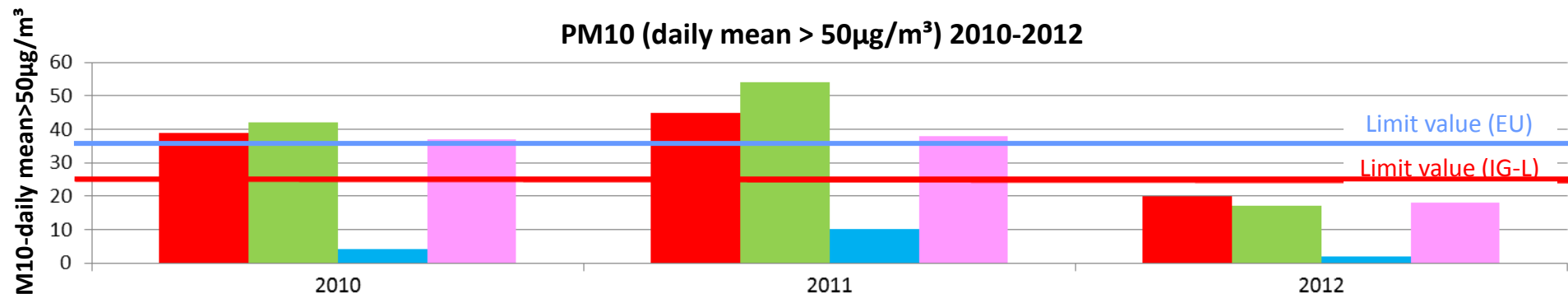
Comparison

Concentrations PM10 (annual mean) 2010-2012

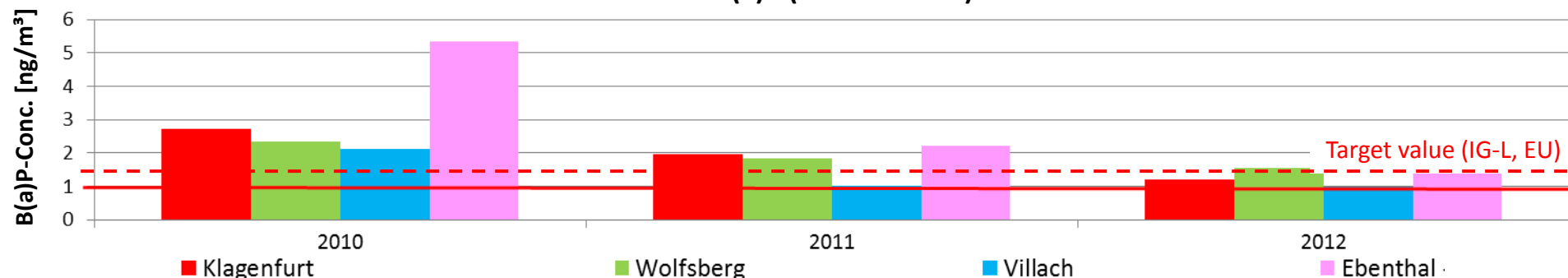
Limit value (IG-L, EU)



PM10 (daily mean > 50µg/m³) 2010-2012



Concentrations B(a)P (annual mean) 2010-2012



■ Klagenfurt

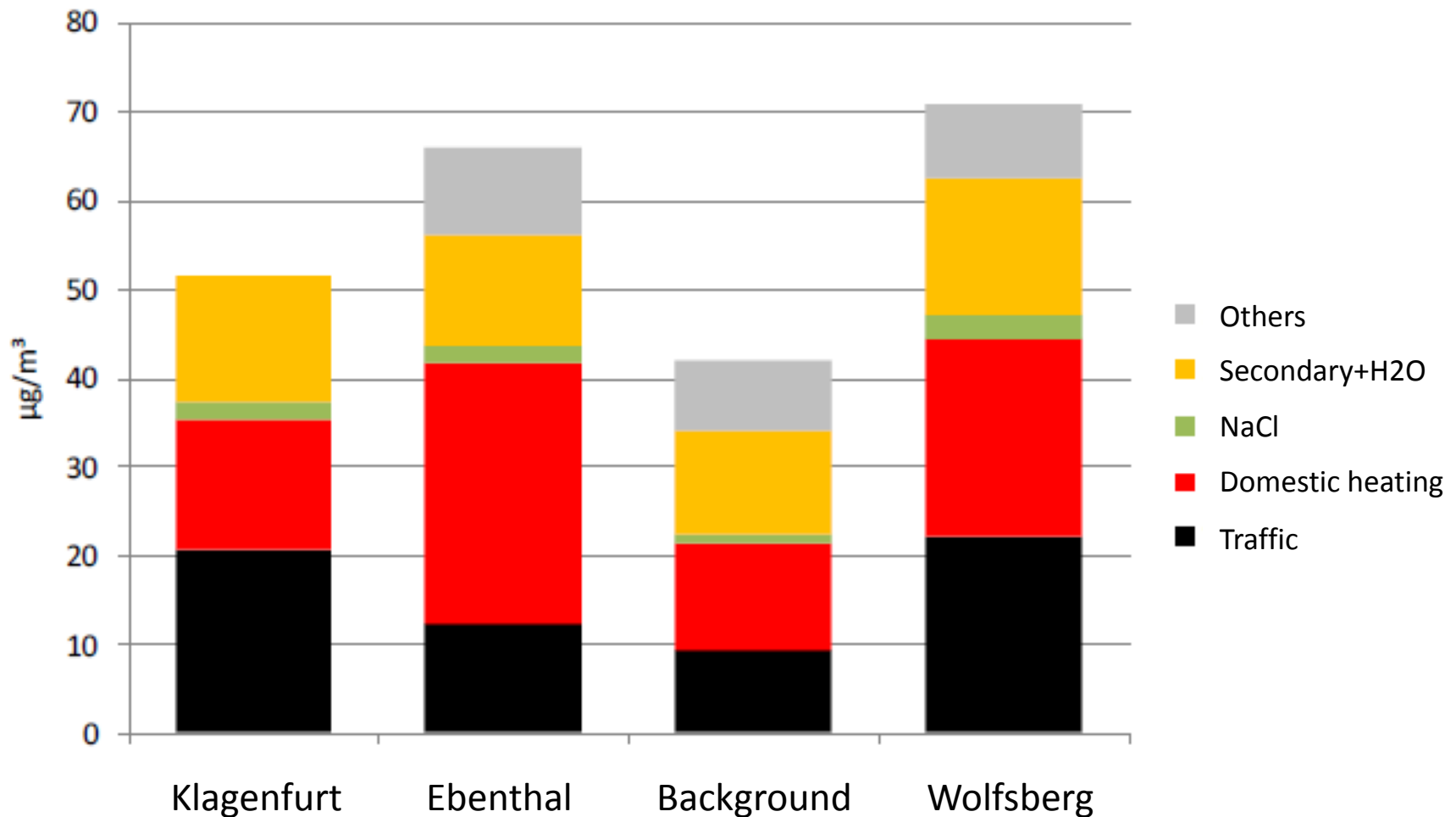
■ Wolfsberg

■ Villach

■ Ebenthal

PM10 source apportionment (winter 2008/09)

LAND  KÄRNTEN



Status survey (limit and/or target values exceeded)

- Description of the immission situation
- Description of the meteorological situation
- Identification of the main emission sources
- Identification of the probable redevelopment area
- Information according to Regulation 2008/50/EC

Programmes

- Specification of measures to be taken to ensure compliance with of limit and/or target values (EU)

**Thank you very much for
your attention and to all
project partners for the
good cooperation!**



Amt der Kärntner Landesregierung

Abteilung 8

(Kompetenzzentrum Umwelt, Wasser und Naturschutz)

UA Ökologie und Monitoring

www.umwelt.ktn.gv.at/luft/index.htm